

View Point

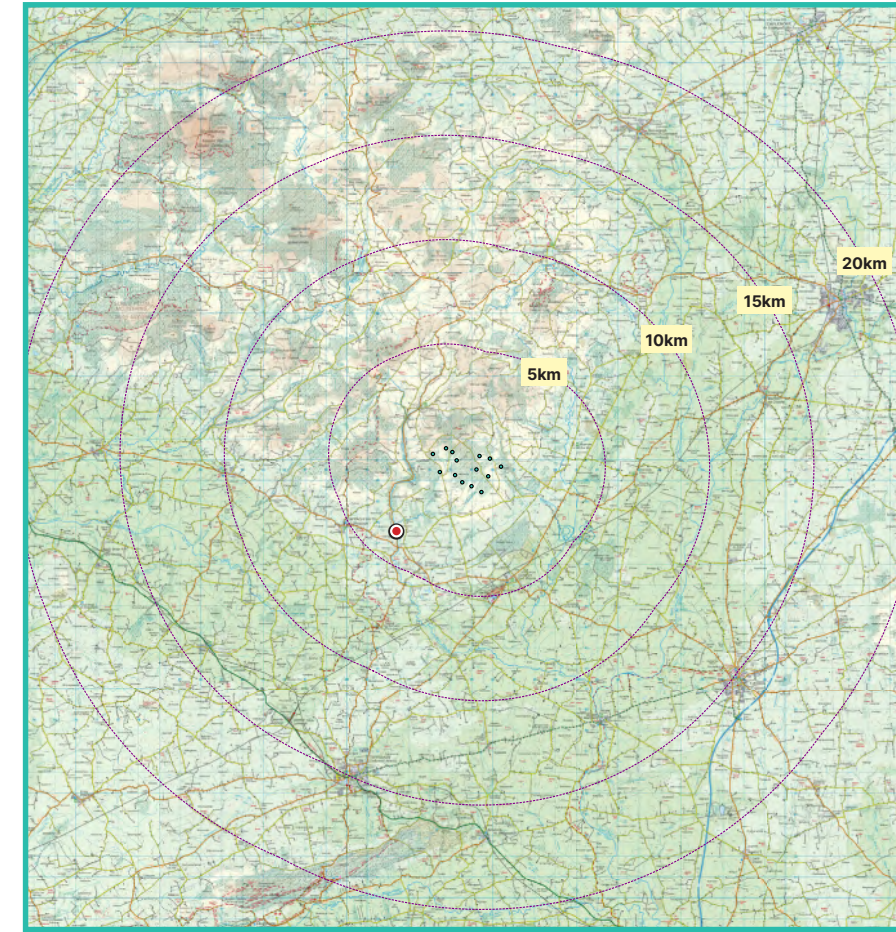
07

SR-20 at Drumminacunna

Photomontage 07

View from Co. Tipperary designated Scenic Route 20 (R497) in the townland of Drumminacunna. Located approximately 3.5km south-west of the nearest turbine (T08).

View point grid reference	E 591323 N 647614
Date of image taken	2024-09-11
Time of image taken	15:29
View point elevation	128m
Angle of Views	90° / 53.5°
View Direction (Image Centre)	45°
Number of proposed turbines visible in Photomontage	7/14
Turbine Hub Height	103.5m
Turbine Rotor Diameter	163m
Turbine Tip Height	185m
Montage Type	Type 4 Photomontage / Survey / Scale Verifiable
Camera & Lens	Canon 5D Mark III / Full Frame Sensor with a 50mm Lens
Tripod	Manfrotto 190X extended to approx 1.5m.
Map Licence	© Ordnance Survey Ireland. All rights reserved. Licence number CYAL50267517

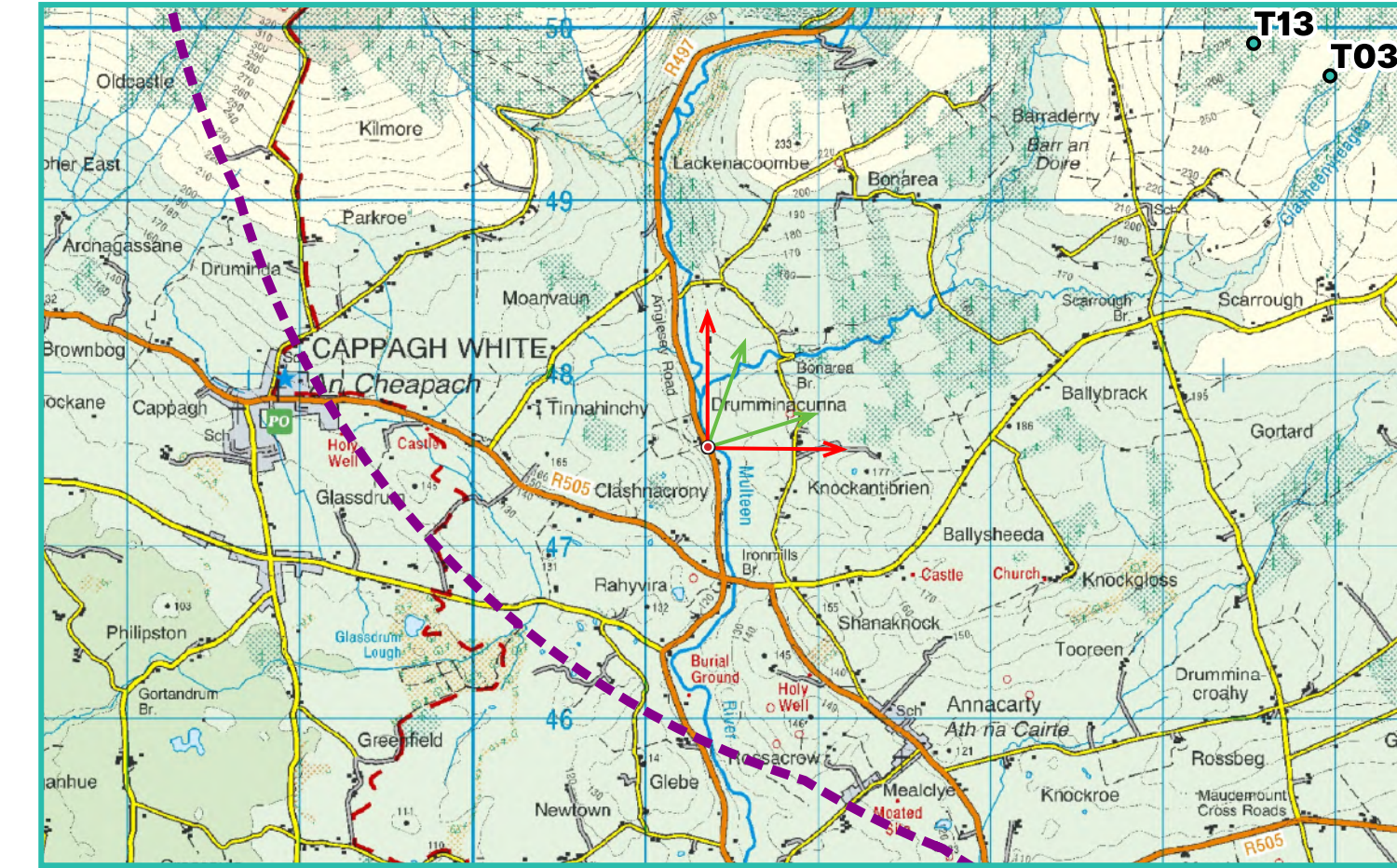


View point relative to 20km radius.



View point relative to proposed wind farm site.

90° View Extent



Detail of view point location.

Map Legend

Area shown in 90° view

Area shown in 53.5° view

View Point

Proposed Carrow Wind Farm

Wireline Legend

Proposed Carrow Wind Farm

Proposed Met Mast (103.5m)

Existing Wind Farms

Permitted Wind Farms

Proposed Wind Farms

Prepared by

MKO
Planning & Environmental Consultants
Tuam Road, Galway.

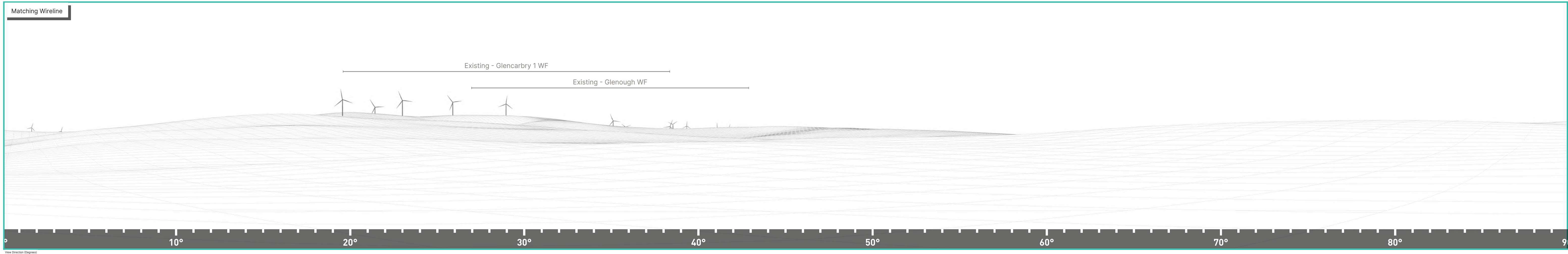
Tel: (091) 73 56 11
E-mail: info@mkofireland.ie
Website: www.mkofireland.ie



Key Image at 120°



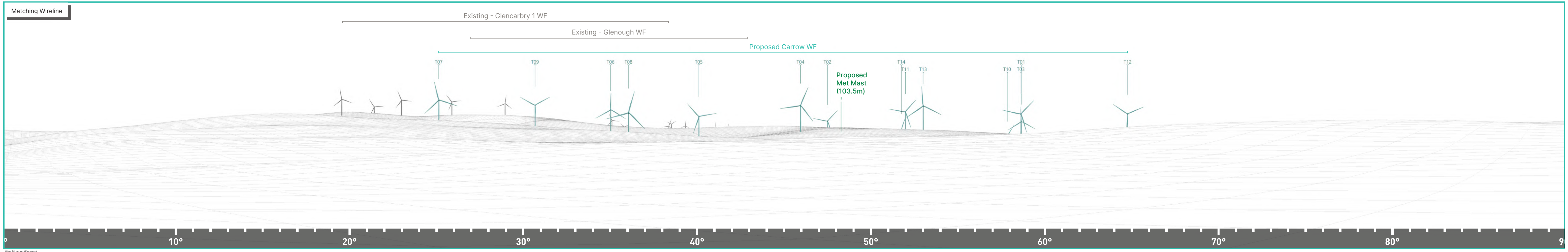
53.5° View Extent



Proposed Photomontage with Cumulative at 90°



Matching Wireline



Proposed Photomontage with Cumulative at 53.5°



20°

30°

40°

50°

60°

70°

Matching Wireline

